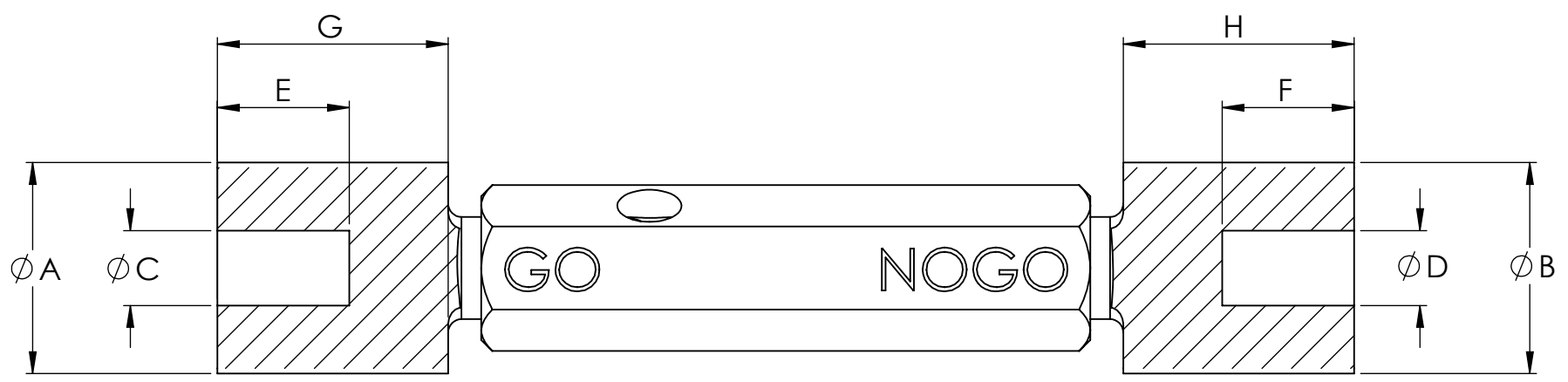


6 5 4 3 2 1

D

D



C

C

Diameter Range: 5.84 to 38.30mm

A (GO)	B (NOGO)	C (GO)	D (NOGO)	E (GO)	F (NOGO)	G (GO)	H (NOGO)

B

B



A

A

DIMENSIONS ARE IN MILLIMETERS			Yorkshire Precision Gauges Hatfield Doncaster England DN7 6QF		
NAME	DATE				
DRAWN	D.Fletcher	08/10/2019	TITLE: DE PG Counter bore Taper-Lock Order Template		t: +44 (0)1302 840 303 f: +44 (0)1302 843 570 Gauges@ypg.co.uk http://www.ypg.co.uk/
MATERIAL: Tool Steel			DWG. NO. CBTL-001		
SCALE: 1:1			SHEET 1 OF 1		

6 5 4 3 2 1